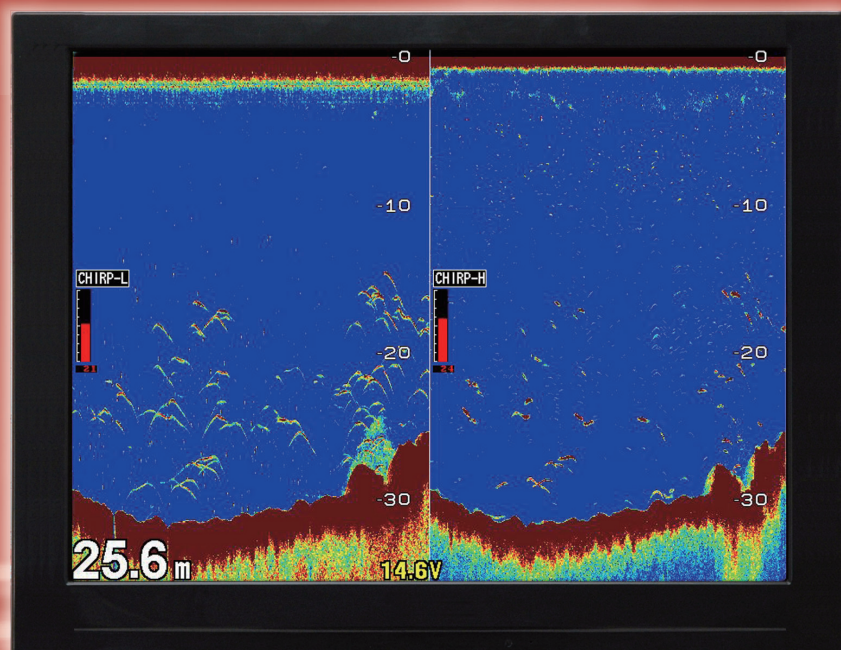


HONDEX[®]

Black-Box Style Chirp Echo Sounder
HE-2900B

New Standard for Commercial Fishing

Chirp Enabled System



Black-Box Style Echo Sounder

HE-2900B

Chirp Model

CLEAR CHIRP
by HONDEX



HE-2900B

Specifications

Operating Voltage	DC11-30V
Power Consumption	Approx. 30W
Dimension	W268 x D238.5 x H89
Weight	Approx. 1.65kg
Display Style	Portrait

Echo Sounder

Frequency	Chirp: 38-70kHz, 130-220kHz Traditional: 50/200kHz
Output Power	1, 2, or 3kW
Depth Range	0-2,000m
Background	4 colors
Color Configuration	5 patterns

Chirp Frequency

High-Chirp	130-220kHz
Low-Chirp	38-70kHz

In the Box

- HE-2900B Main Unit
- Power Cable: DC06
- Remote: CR07



Main Unit



DC06



CR07

Options

- Water Temp(Thru-Hull) Kit: TC02CS(15m), TCK01
- Water Temp(Transom): TC03-05/10 (5/10m)



TC02CS



TCK01



TC03-05/10

Compatible Transducer



TD340 / TD340T
(1kW 38-70kHz + 1kW 130-220kHz)



TD360
(2kW 38-70kHz + 1kW 130-220kHz)



TD380
(3kW 38-70kHz + 1kW 130-220kHz)

Specifications are subject to change without notice.

● Dealer



HONDA ELECTRONICS CO., LTD.

20 Oyamazuka, Oiwa-cho,
Toyohashi, Aichi 441-3193, Japan

TEL: +81-532-41-2512

<https://www.honda-el.co.jp/en/marine/>



HONDEX is the registered trademark of HONDA ELECTRONICS CO.,LTD. in the United States, Japan and other countries.