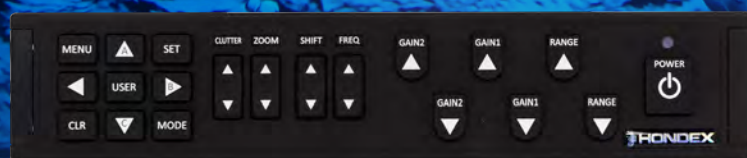
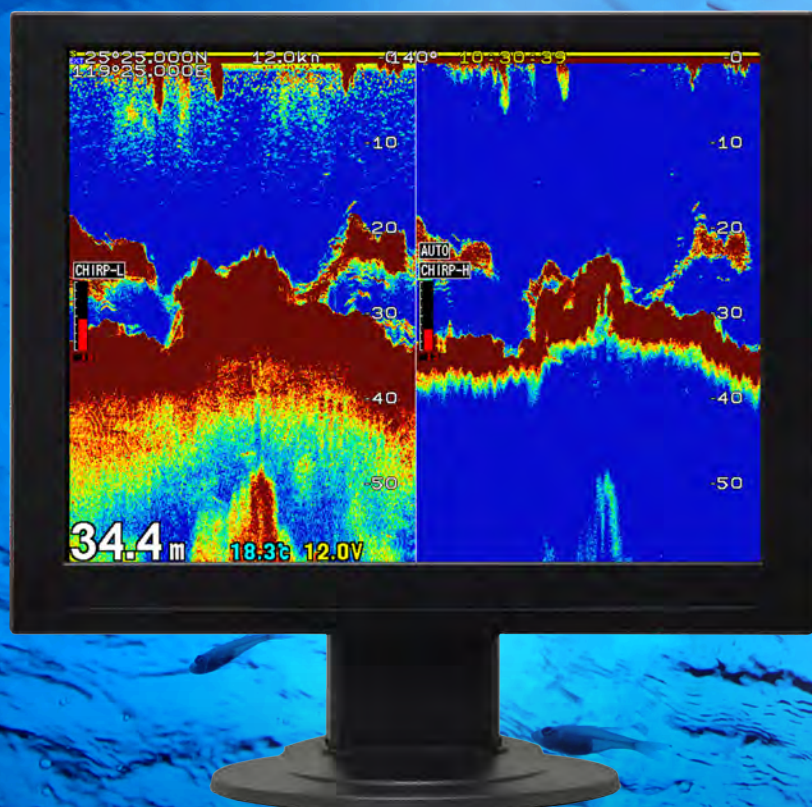


**HONDEX**®

Black-Box Style Chirp Echo Sounder  
HE-2910B

# New Standard for Commercial Fishing

## Chirp Enabled System



Black-Box Style Echo Sounder

# HE-2910B

Chirp Model



# HE-2910B

## Specifications

Operating Voltage	DC11-30V
Power Consumption	Approx. 20W
Dimension	W385 x D235 x H70
Weight	Approx. 2.4kg
Display Style	Landscape
Number of pixel	800 × 600

## Echo Sounder

Frequency	Chirp: 38-70kHz, 130-220kHz Traditional: 50/200kHz etc.
Output Power	1 to 5kW
Background	4 colors
Color Configuration	5 patterns

## Chirp Frequency

High-Chirp	130-220kHz
Low-Chirp	38-70kHz

\*when using chirp Transducers  
\*TD390:Dedicated Low-Chirp Transducer

## In the Box

- HE-2910B Main Unit
- Power Cable: DC07
- Remote: CR08



Main Unit



DC07



CR08

## Options

- Water Temp(Thru-Hull) Kit: TC02CS(15m), TCK01
- Water Temp(Transom): TC03-05/10 (5m/10m)



TC02CS



TCK01



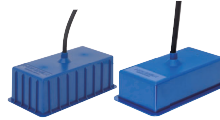
TC03-05/10

## Compatible Transducer

### Chirp



**TD340 / TD340T**  
(1kW 38-70kHz, 1kW 130-220kHz)



**TD360 / TD361**  
(2kW 38-70kHz, 1kW 130-220kHz)



**TD380**  
(3kW 38-70kHz, 1kW 130-220kHz)



**TD390**  
(5kW 38-70kHz)

### Traditional



**TD47T**  
(1kW/50&200kHz)



**TD67T**  
(1.8kW 50kHz, 1kW 200kHz)



**TD68**  
(2kW 50kHz, 1kW 200kHz)



**TD86**  
(3kW 50kHz, 1kW 200kHz)



**TD88**  
(3kW 28kHz)

**TD93**  
(5kW 40&75kHz)

Specifications are subject to change without notice.

● Dealer



HONDA ELECTRONICS CO., LTD.

20 Oyamazuka, Oiwa-cho,  
Toyohashi, Aichi 441-3193, Japan

<https://en.honda-el.co.jp/product/marine>



**HONDEX** is the registered trademark of HONDA ELECTRONICS CO.,LTD. in the United States, Japan and other countries.